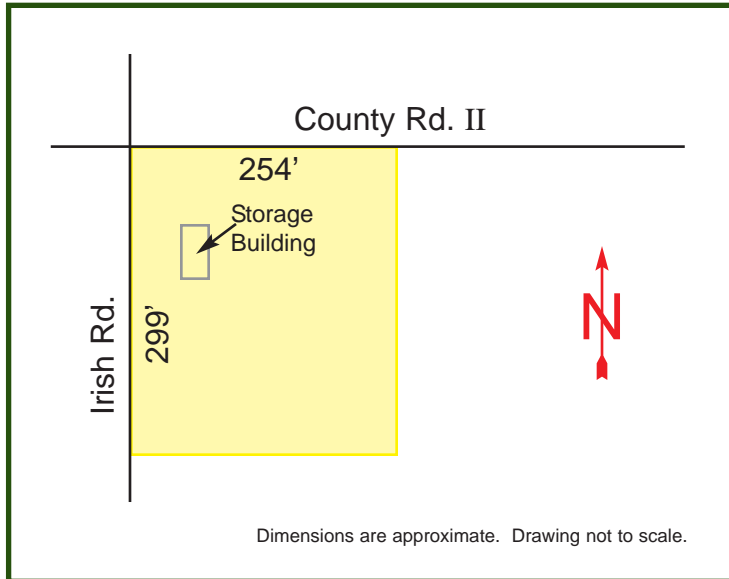


F O R S A L E

COMMERCIAL CORNER

Irish Rd., Neenah



Key Information

Address: 593 Irish Rd., Neenah, WI
(corner of County Rd. II & Irish Rd.)

Zoning: B-3, General Business

Lot Size: 1.75 acres (approx.)

Municipality: Town of Neenah,
Winnebago County

Utilities: Water and sewer across street
right-of-way. See Broker for
details.

Price: \$175,000

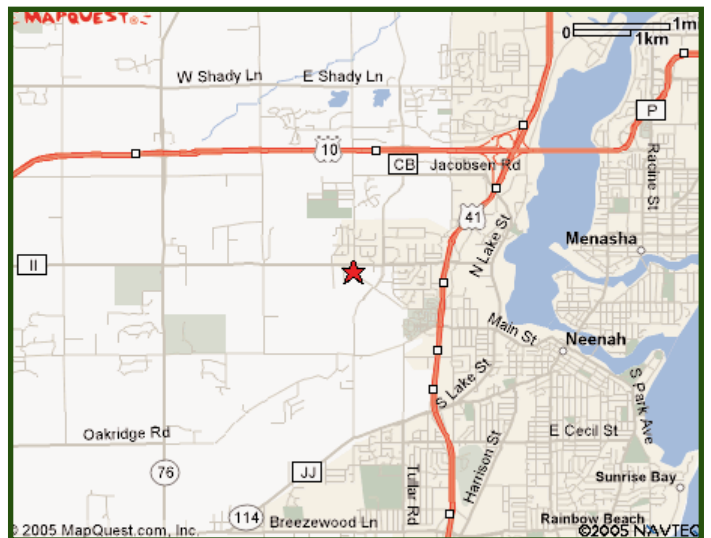
Multiple use corner already zoned for business.

Location is a short distance from Highway 41 on County Road II.

This is a great location for a mini warehouse operation that could include outdoor storage for boats, trailers, or RV vehicles.

Other potential businesses may include:

- Convenience Store.
- Service and repair shops of many kinds.
- Health Club.
- Retail Stores.
- Office building.
- Warehousing and / or wholesale distributon.



MEERDINK & ASSOCIATES, INC.

Brokers, Developers & Managers of Business Real Estate

4351 W. COLLEGE AVENUE, APPLETON, WI 54914
(920) 734-0099 PHONE (920) 739-4322 FAX
jverhagen@meerdink.com